

# MONTHLY MEMBERSHIP PROGRESS REPORT

District 201Q3

Results as of: 6/30/2020

GMT:

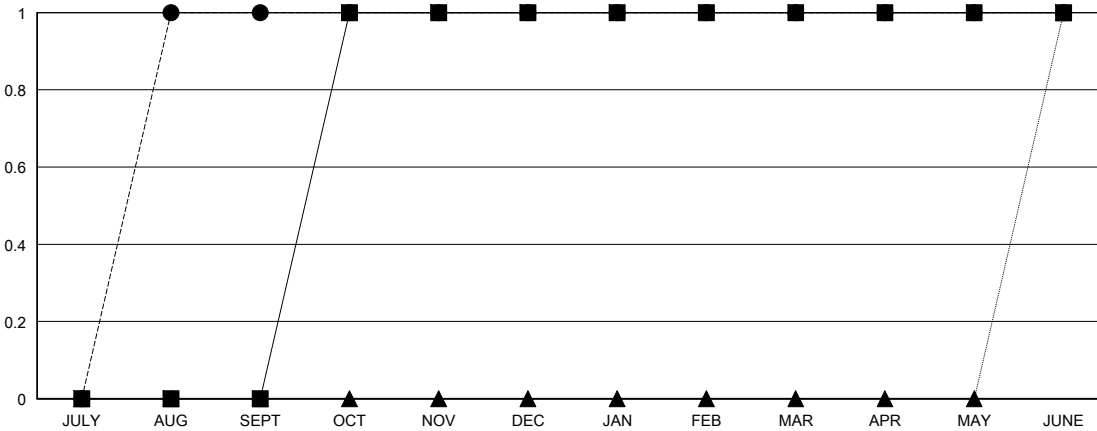
LOCATION AUSTRALIA

GMT CA

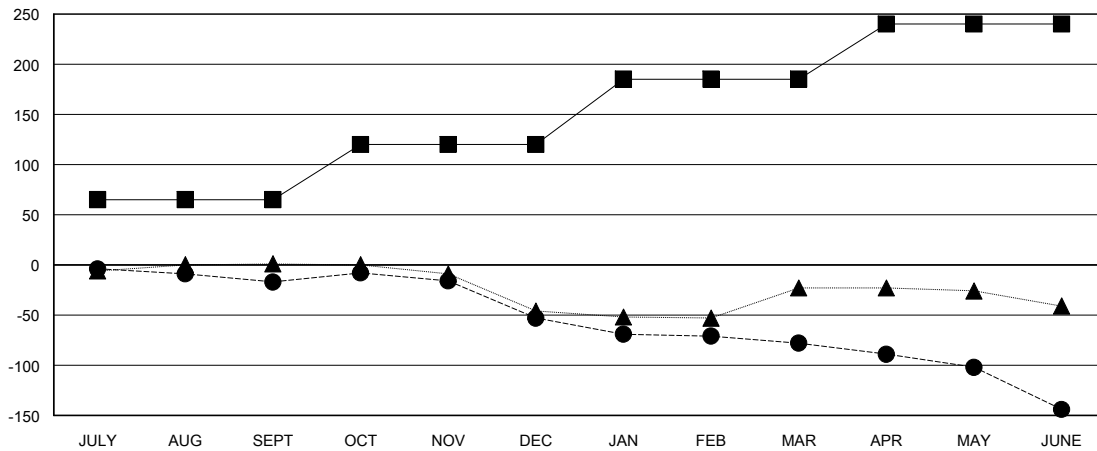
Clubs			
RESULTS FOR 2019-2020			
QUARTER	NEW CLUB GOAL	NEW CLUBS	DROPPED CLUBS
JULY/AUG/SEPT	0	1	0
OCT/NOV/DEC	1	0	0
JAN/FEB/MAR	0	0	0
APR/MAY/JUNE	0	0	1

Members			
RESULTS FOR 2019-2020			
QUARTER	MEMBER GROWTH NET GOAL	MEMBER GROWTH ACTUAL	DROPPED MEMBERS ACTUAL (including transfers)
JULY/AUG/SEPT	65	77	85
OCT/NOV/DEC	55	58	81
JAN/FEB/MAR	65	54	71
APR/MAY/JUNE	55	27	84

GOALS AND ACTUAL NEW CLUBS CUMULATIVE



GOALS AND ACTUAL MEMBERS CUMULATIVE



DROPPED CLUBS: 1	
<b>DROPPED MEMBERS</b>	
DECEASED	30
CLUB CANCELLED	0
OTHER	291
<b>TOTAL</b>	<b>321</b>

52 CLUBS OF 74 ADDED 1 OR MORE NEW MEMBERS

GENDER DISTRIBUTION	
MALE	948 (59.44%)
FEMALE	647 (40.56%)

[CLICK HERE FOR CUMULATIVE MEMBERSHIP DATA](#)

TOTAL FAMILY UNIT MEMBERS	360
FAMILY MEMBERS PAYING HALF DUES	182